



The Beacon

LIGHTHOUSE CHRISTIAN SCHOOL NEWSLETTER

JANUARY - 2026

904-272-2524

DWOODS@LIGHTHOUSECHRISTIANSCHOOL.NET



FROM THE DIRECTORS DESK:

Welcome back! We hope you enjoyed a joyful Christmas break filled with rest, celebration, and time with loved ones. As we step into 2026 together, we are excited for all the growth and learning this New Year will bring. January is a wonderful time for students to refocus and set new goals. With the school year halfway through, it's important for every student to stay on track, finishing assignments on time, putting in their best effort, and continuing to build strong character both in and out of the classroom. Smart daily choices make a big difference, and we believe each of our students are capable of great success.

We encourage families to partner with us by supporting good study habits, consistent attendance, and positive routines at home. Together, we can help our students start the year strong and keep that momentum going! Thank you for your continued support of Lighthouse Christian School. We are grateful for the privilege of guiding your children academically, spiritually, and socially. Let's make this a fantastic start to 2026 full of perseverance, progress, and God's blessings!

Ms. Woods, Director

ORDER YOUR YEARBOOKS NOW!

Make sure you order your copy of our 2025/26 Lighthouse Christian School Yearbook. Cost is \$45
Cash/Check/Money Order's Only



SCHOOL HAPPENINGS!



FLORIDA SERVICE DOGS' VISIT

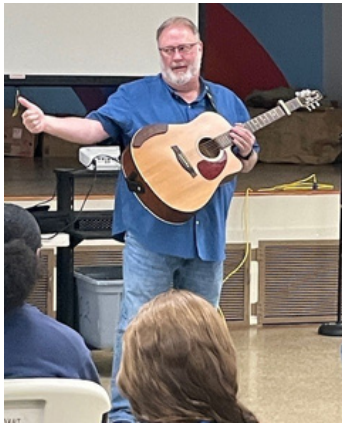
We were honored to welcome Florida Service Dogs to our campus in November! Carol C., the founder and owner, brought several of her incredible service dogs to meet our students and share about the important work they do.

Florida Service Dogs is dedicated to supporting Veterans and other people with disabilities by training highly skilled service dogs that provide comfort, mobility assistance, and emotional support. Carol talked with our students about how these dogs change lives helping Veterans and others regain independence, confidence, and companionship.

Our students enjoyed learning how service dogs are trained, the special commands they follow, and the difference they make. Of course, the highlight was spending time with the dogs themselves!

We are grateful to Carol and her team for taking the time to visit Lighthouse Christian School and teach us about service, respect, and the many ways dogs can be true heroes.





From the Desk of...

*Pastor
Larry*

I hope that everyone is having wonderful Christmas and Epiphany seasons!

Well, we are in the second half of the school year, and again I find myself blessed to have been invited into your children's lives for a devotional time on Wednesdays. I usually talk about the Scripture for the week, or focus on an upcoming holiday, but regardless of what the topic is, my goal is to always relate the words that they hear to their lives here and now.

What impresses me the most about your children is the response that I receive when I ask questions. I will ask, "What does this passage mean?" or "What does this mean for us today?" Your children respond with reverence, with intelligence, and with spirit-led wisdom. I always find myself smiling when they participate, because this means that they are invested in the conversation, and with what God means in their lives.

Investment is a large part of the educational system, and a large part of Advent's partnership with Lighthouse. As a church, we are invested in this partnership, and we are committed to supporting Lighthouse in its mission. Our security meetings have been fruitful, and in order to better provide security, we hope to merge the church's security camera system with Lighthouse's to keep a wider lookout around the entire building. Advent has also added "speed bumps" to the newly sealed asphalt driveway to continue to control the speed of those dropping off youth for school (The speed limit is 5 MPH during school hours)! We want a safe place for your children!

I have great hope for the future of your children, thanks to the dedicated teachers and staff at Lighthouse, and together, we will continue to strive to provide a clean, safe, and positive faith-based education for them. I look forward to many years of this wonderful partnership!

Pastor Larry Grunden
Advent Lutheran Church

Tuition NEWS

Please remember to log into your EMA accounts and approve 3rd Quarter invoices. Please see Mrs. Brecht for all tuition payments - check, money order or cash only. Payments are due at the beginning of the month by the 5th. If you have questions regarding your amount due, please call Mrs. Brecht in the office at 904-272-2524.

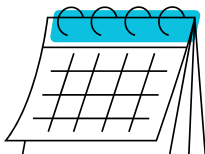
MARK YOUR CALENDARS!

STUDENTS & STAFF RETURN TO SCHOOL - JANUARY 5

PICTURE RE-TAKE DAY - JANUARY 8TH

MARTIN LUTHER KING JR. DAY - JANUARY 19TH

HALF-DAY - TEACHER PLANNING DAY - JANUARY 22ND



SENIOR NEWS!

Just a friendly reminder final payments for Senior Fees is due Wednesday, January 7th. This is the week we return from Christmas break. If you have any questions or need your balances please contact Mrs. Brecht.

SENIOR SPOTLIGHT



Kaitlyn

Kaitlyn loves spending time outdoors, whether she's walking, running, or simply enjoying the beauty of nature. She is also passionate about animals and enjoys caring for dogs, rabbits, fish, and even coral reefs! When she's relaxing, you can usually find her listening to her favorite pop or rock music.

Kaitlyn has big plans for her future. She dreams of becoming a Defense Attorney so she can help and advocate for others. After graduation, she plans to attend college to pursue her Law Degree and hopes to travel the world along the way.

We are so proud of Kaitlyn and excited to see all that God has in store for her!